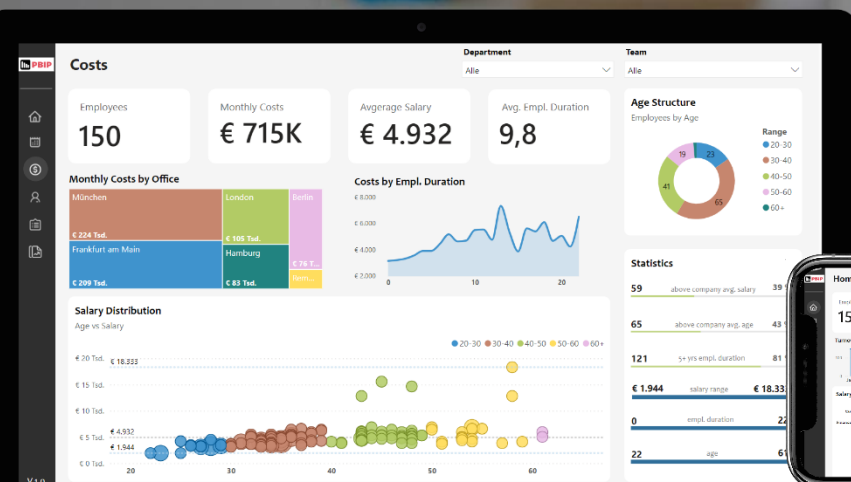


Power BI For Personio

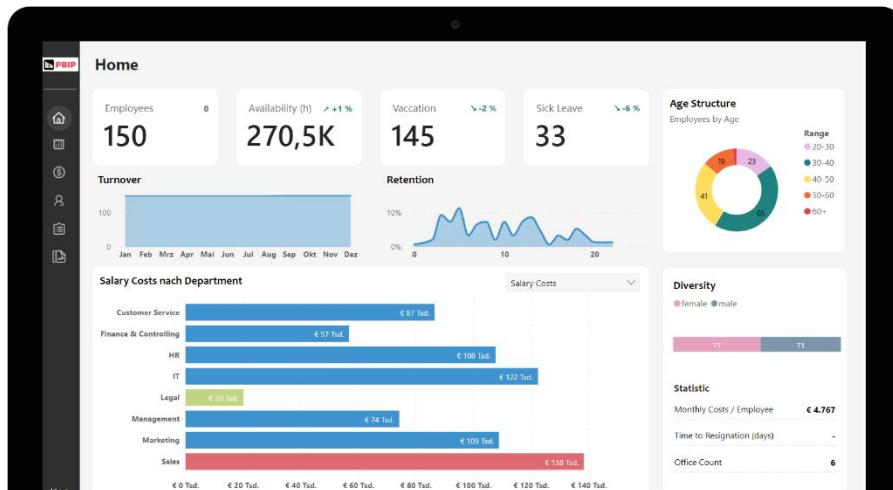


"Unlocking Insights,
Empowering HR: Transforming
Data into Strategies."



Supercharge Your HR Analytics with Power BI for Personio!

Unlock the full potential of your HR data with our dynamic integration of Power BI and Personio. Elevate your analytics game, make data-driven decisions, and transform your HR processes.



Key Features:

- Seamless Integration: Connect Personio effortlessly to Power BI for a unified view of your HR metrics.
- Customizable Dashboards: Tailor dashboards to your unique needs, visualizing critical HR insights at a glance.
- Real-time Analytics: Stay ahead with up-to-the-minute data, empowering proactive decision-making.
- Data Security: Trust in robust security measures to safeguard your sensitive HR information.

Benefits:

- Boost Efficiency: Streamline HR operations by identifying bottlenecks and optimizing processes.
- Cost Savings: Identify cost-saving opportunities and optimize resource allocation.
- Strategic Planning: Make informed, strategic decisions to drive your organization forward.
- Enhance Employee Experience: Tailor HR strategies for a happier, more engaged workforce.

Who Can Benefit:

- HR Managers
- Executives
- People Analytics Teams

Integration



Effortless integration of personal data, directly and securely - No interim storage on our servers, ensuring privacy and seamless data handling.

What does the Power BI for Personio Integration do, and how does it ensure security?

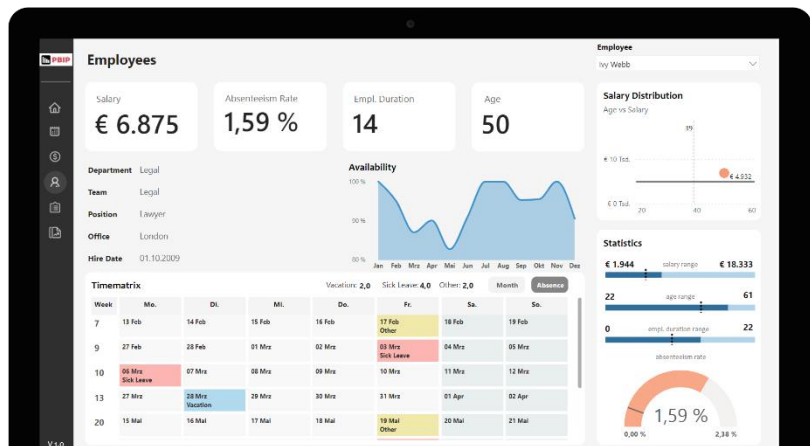
The Power BI for Personio Integration connects your Personio account to Microsoft Power BI, making it easy to analyze HR data visually. It ensures security by implementing strong measures to protect the confidentiality and integrity of your HR information.

How do I configure the Power BI for Personio Integration for my organization?

Configuring the Power BI for Personio Integration is straightforward. Begin by accessing your Personio account settings and follow the step-by-step instructions provided in our comprehensive configuration guide. Should you encounter any issues, our support team is ready to assist you through the process.

Power BI for Personio at a glance

Experience the power of data-driven decision-making with our intuitive dashboard for analyzing Personio HR data.



Dashboard

Comprehensive departmental overview: Analyze age structures, diversity, and retention trends for a detailed understanding of your workforce dynamics.



Availability

Gain instant visibility into workforce presence and availability - Explore real-time insights on employee absences and availability through our dynamic data dashboards.



Costs

Effortlessly monitor monthly employee costs and salary distribution by age - Gain insights into expenditures with comprehensive cost reports.



Employees

Comprehensive employee analytics at your fingertips - Dive into detailed insights, covering employee absence, salary, and more in our comprehensive reporting.



Details

Explore in-depth employee analytics - Delve into detailed insights covering employee office, location, and comprehensive data for informed decision-making on the detailed page.



YOY Overview

Yearly evolution snapshot: Track changes, absences, headcount shifts, and average age demographics for comprehensive year-to-year insights.

FAQ

Q1: What is Power BI for Personio?

A: Power BI for Personio is an integration solution that seamlessly connects Microsoft Power BI with Personio, allowing you to visualize and analyze your HR data in a powerful and user-friendly way.

Q2: How does the integration work?

A: The integration works by establishing a connection between your Personio account and Microsoft Power BI, enabling the transfer of HR data for in-depth analysis. It transforms raw data into actionable insights.

Q3: What HR metrics can I analyze using Power BI for Personio?

A: You can analyze a wide range of HR metrics, including employee performance, recruitment data, attendance trends, and more. The integration provides customizable dashboards to focus on the metrics that matter most to your organization.

Q4: Is real-time data available in Power BI for Personio?

A: Yes, the integration supports real-time data analytics, ensuring that you can make timely and informed decisions based on the latest HR information.

Q5: How secure is Power BI for Personio?

A: Security is a top priority. The integration adheres to robust security measures, aligning with industry standards to safeguard the confidentiality and integrity of your HR data.

Q6: Who can benefit from using Power BI for Personio?

A: Power BI for Personio is beneficial for HR managers, executives, and people analytics teams. It empowers users to optimize HR processes, make strategic decisions, and enhance the overall employee experience.

Q7: How do I get started with Power BI for Personio?

A: Getting started is easy! Visit <https://sabanalytics.com/power-bi-for-personio> for detailed information, including setup instructions and resources to help you make the most of the integration.

Q8: Is there training available for Power BI for Personio?

A: Yes, we offer training resources, including tutorials and documentation, to help you become proficient in using Power BI for Personio. Our goal is to ensure you maximize the benefits of the integration.

Q9: What is the pricing model for Power BI for Personio?

A: The pricing model for Power BI for Personio is based on a monthly subscription. Visit our website or contact our sales team for detailed pricing information tailored to your organization's needs. Go to for more information: <https://sabanalytics.com/power-bi-for-personio/#priceplan>

Q10: Are there any special offers or promotions available?

A: To inquire about current special offers, discounts, or promotions, please visit our website or contact our support team. We may have exclusive deals that can add value to your adoption of Power BI for Personio. Go to for more information: <https://sabanalytics.com/contact-us/>



Get in touch with us



www.sabanalytics.com



info@sabanalytics.com

 **SAB Analytics**